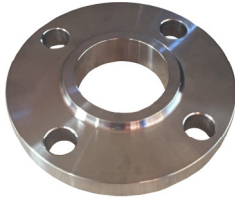


**SLIP ON WELD FLANGE  
- ANSI 150**



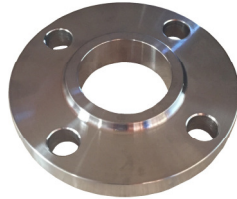
PART No	SIZE
31SSF025-A150	1
31SSF032-A150	1.1/4
31SSF040-A150	1.1/2
31SSF050-A150	2
31SSF065-A150	2.1/2
31SSF080-A150	3
31SSF100-A150	4
31SSF150-A150	6
31SSF200-A150	8

**SLIP ON WELD FLANGE  
- DIN PN16**



PART No	SIZE
31SSF040-DIN16	1.1/2
31SSF050-DIN16	2
31SSF065-DIN16	2.1/2
31SSF080-DIN16	3

**SLIP ON WELD FLANGE  
- ANSI 300**



PART No	SIZE
31SSF040-A300	1.1/2
31SSF050-A300	2
31SSF065-A300	2.1/2
31SSF080-A300	3
31SSF100-A300	4

**BSP SCREWED FLANGE  
- TABLE E**



PART No	SIZE
31SSF025S-E	1
31SSF032S-E	1.1/4
31SSF040S-E	1.1/2
31SSF050S-E	2
31SSF065S-E	2.1/2
31SSF080S-E	3
31SSF100S-E	4

**SLIP ON WELD FLANGE  
- TABLE E**



PART No	SIZE
31SSF025-E	1
31SSF032-E	1.1/4
31SSF040-E	1.1/2
31SSF050-E	2
31SSF065-E	2.1/2
31SSF080-E	3
31SSF100-E	4
31SSF150-E	6
31SSF200-E	8

**BSP SCREWED FLANGE  
- TABLE D**



PART No	SIZE
31SSF100S-D	4

**BSP SCREWED FLANGE  
- ANSI 150**



PART No	SIZE
31SSF040S-A150	1.1/2
31SSF050S-A150	2
31SSF065S-A150	2.1/2
31SSF080S-A150	3
31SSF100S-A150	4

**SLIP ON WELD FLANGE  
- TABLE D**



PART No	SIZE
31SSF080-D	3
31SSF100-D	4
31SSF150-D	6
31SSF200-D	8

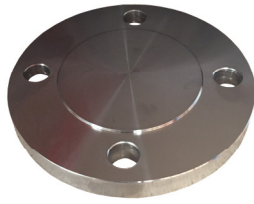
**BSP SCREWED FLANGE  
- DIN PN16**



PART No	SIZE
31SSF025S-DIN16	1
31SSF032S-DIN16	1.1/4
31SSF040S-DIN16	1.1/2
31SSF050S-DIN16	2
31SSF065S-DIN16	2.1/2
31SSF080S-DIN16	3

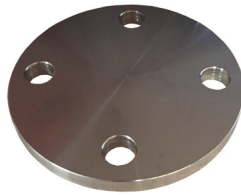
**PIPE FLANGES CONTINUED**

**BLIND FLANGE  
- ANSI 150**



PART No	SIZE
31SSF025B-A150	1
31SSF032B-A150	1.1/4
31SSF040B-A150	1.1/2
31SSF050B-A150	2
31SSF065B-A150	2.1/2
31SSF080B-A150	3
31SSF100B-A150	4
31SSF150B-A150	6

**BLIND FLANGE  
- TABLE E**



PART No	SIZE
31SSF025B-E	1
31SSF032B-E	1.1/4
31SSF040B-E	1.1/2
31SSF050B-E	2
31SSF065B-E	2.1/2
31SSF080B-E	3
31SSF100B-E	4
31SSF150B-E	6

**BLIND FLANGE  
- TABLE D**



PART No	SIZE
31SSF100B-D	4
31SSF150B-D	6

**TUBE O.D. SLIP ON WELD FLANGES**



**- ANSI 150**

PART No	SIZE
31SSTF040-A150	1.1/2
31SSTF050-A150	2
31SSTF065-A150	2.1/2
31SSTF080-A150	3

**- TABLE E**

PART No	SIZE
31SSTF025-E	1
31SSTF032-E	1.1/4
31SSTF040-E	1.1/2
31SSTF050-E	2
31SSTF065-E	2.1/2
31SSTF080-E	3
31SSTF100-E	4
31SSTF150-E	6

**- TABLE D**

PART No	SIZE
31SSTF100-D	4
31SSTF150-D	6

**- DIN PN16**

PART No	SIZE
31SSTF040-DIN16	1.1/2
31SSTF050-DIN16	2
31SSTF065-DIN16	2.1/2
31SSTF080-DIN16	3

**RUBBER FLANGE GASKET**

Thickness 3mm

**CATEGORY 60**



PART No	SIZE	DESCRIPTION
60FG-08	1/2	Table D/E
60FG-12	3/4	Table D/E
60FG-16	1	Table D/E
60FG-20	1.1/4	Table D/E
60FG-24	1.1/2	Table D/E
60FG-32	2	Table D/E
60FG-40	2.1/2	Table D/E
60FG-48	3	Table D/E
60FG-64	4	Table D
60FG-96	6	Table D
60FGE-64	4	Table E
60GFE-96	6	Table E
60FGE-128	8	Table E