

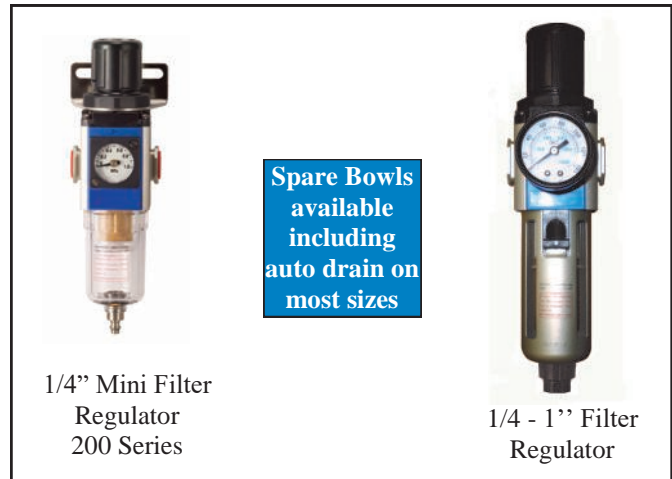
IFS Air Equipment. (Category 26)

All products come in Clam Shell Packaging for easy display except the 600 Series

Filter Regulator

Code	Series	Thread	Height	Width
26-GFR200-04	200	1/4 BSP	160mm	47mm
26-GFR300-04	300	1/4 BSP	223mm	60mm
26-GFR300-06	300	3/8 BSP	223mm	60mm
26-GFR300-08	300	1/2 BSP	223mm	60mm
26-GFR400-08	400	1/2 BSP	264mm	80mm
26-GFR600-12	600	3/4 BSP	360mm	99mm
26-GFR600-16	600	1" BSP	360mm	99mm

- Standard filter is 5µ.
- All Filter Regulators come with a bracket and gauge.
- Supplied standard with Semi-Auto drain which drains automatically when system is depressurised. Fully Automatic Drain also available for series 300-600.



1/4" Mini Filter Regulator
200 Series

1/4 - 1" Filter Regulator

The GFR300-04 is our most common Filter Regulator

Regulator

Code	Series	Thread	Height	Width
26-GR200-04	200	1/4 BSP	90mm	47mm
26-GR300-04	300	1/4 BSP	112mm	60mm
26-GR300-06	300	3/8 BSP	112mm	60mm
26-GR300-08	300	1/2 BSP	112mm	60mm
26-GR400-08	400	1/2 BSP	140mm	80mm
26-GR600-12	600	3/4 BSP	189mm	99mm
26-GR600-16	600	1" BSP	189mm	99mm

All Regulators come with a bracket and gauge.



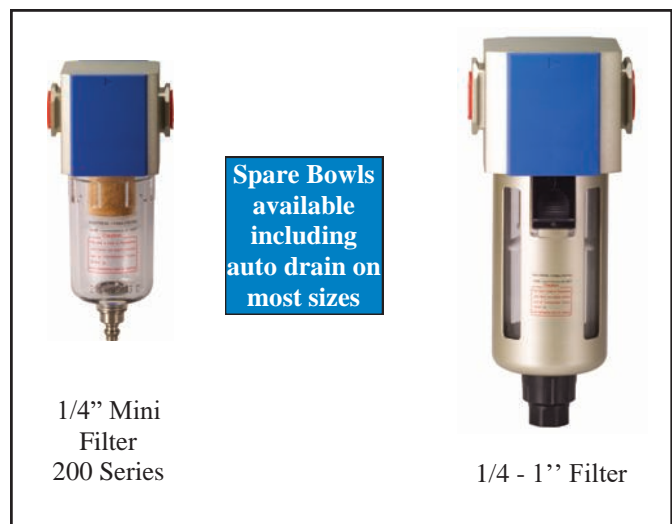
1/4" Mini Regulator
200 Series

1/4 - 1" Regulator

Filter (Water Trap)

Code	Series	Thread	Height	Width
26-GF200-04	200	1/4 BSP	109mm	47mm
26-GF300-04	300	1/4 BSP	160mm	60mm
26-GF300-06	300	3/8 BSP	160mm	60mm
26-GF300-08	300	1/2 BSP	160mm	60mm
26-GF400-08	400	1/2 BSP	190mm	80mm
26-GF600-12	600	3/4 BSP	225mm	99mm
26-GF600-16	600	1" BSP	225mm	99mm

- Standard filter is 5µ.
- All Filters come with a bracket.
- Supplied standard with Semi-Auto drain which drains automatically when system is depressurised. Fully Automatic Drain also available for series 300-600.



1/4" Mini Filter
200 Series

1/4 - 1" Filter

Port Size	200 Mini Series 1/4"	300 Series 1/4, 3/8 & 1/2	400 Series 1/2"	600 Series 3/4 & 1"
Max Working Pressure	145psi	145psi	145psi	145psi
Maximum Flow Rate	3000 l/min	4000 l/min	6000 l/min	12000 l/min
Working Temperature	-10°C to +60°C	-10°C to +60°C	-10°C to +60°C	-10°C to +60°C

IFS Air Equipment. (Category 26)

Lubricator

Code	Series	Thread	Height	Width
26-GL200-04	200	1/4 BSP	119mm	47mm
26-GL300-04	300	1/4 BSP	168mm	60mm
26-GL300-06	300	3/8 BSP	168mm	60mm
26-GL300-08	300	1/2 BSP	168mm	60mm
26-GL400-08	400	1/2 BSP	187mm	80mm
26-GL600-12	600	3/4 BSP	256mm	99mm
26-GL600-16	600	1" BSP	256mm	99mm

All Lubricators come with a bracket.
Lubricator can be refilled without shutting down the system.



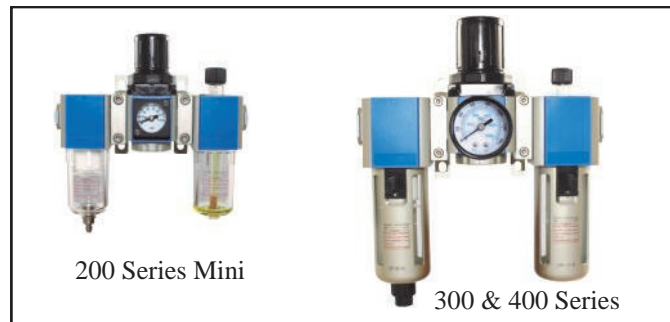
Filter Regulator + Lubricator

Code	Series	Thread	Height	Width
26-GMA200-04	200	1/4 BSP	160mm	99mm
26-GMA300-04	300	1/4 BSP	223mm	126mm
26-GMA300-06	300	3/8 BSP	223mm	126mm
26-GMA300-08	300	1/2 BSP	264mm	126mm
26-GMA400-08	400	1/2 BSP	360mm	169mm



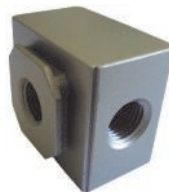
Filter + Regulator + Lubricator

Code	Series	Thread	Height	Width
26-GMB200-04	200	1/4 BSP	139mm	151mm
26-GMB300-04	300	1/4 BSP	188mm	192mm
26-GMB300-06	300	3/8 BSP	188mm	192mm
26-GMB300-08	300	1/2 BSP	188mm	192mm
26-GMB400-08	400	1/2 BSP	207mm	258mm



Distribution Blocks

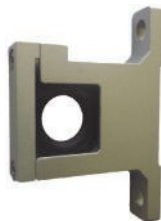
Positioned between the Filter Reg and Lubricator with a joining or mounting bracket, air can be distributed to separate locations.



Code	Description
26-GA214-04	200 Series Distribution Block 1/4 Outlet
26-GA314-04	300 Series Distribution Block 1/4 Outlet
26-GA414-08	400 Series Distribution Block 1/2 Outlet
26-GA614-16	600 Series Distribution Block 1" Outlet

Mounting Brackets

Code	Description
26-GA201	200 Series Mounting Bracket
26-GA301	300 Series Mounting Bracket
26-GA401	400 Series Mounting Bracket



Used to join units together. Supplied with mounting holes.

Joining Brackets

Code	Description
26-GA203	200 Series Joining Bracket
26-GA303	300 Series Joining Bracket
26-GA403	400 Series Joining Bracket



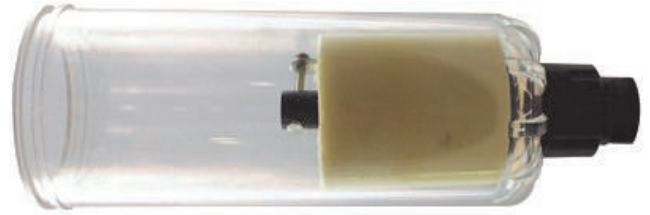
Used to join units together.

SEE NEXT PAGE FOR SPARE BOWLS AND FILTER ELEMENTS

IFS Air Equipment. (Category 26)

Auto Drain Filter Bowls

Code	Description
26-ADB300	300 Series Auto Drain Bowl
26-ADB400	400 Series Auto Drain Bowl
26-ADB600	600 Series Auto Drain Bowl



Replacement Bowls and Filter Elements

Series	Bowl Code	Element Code
200	26-GB200	26-GFE200
300	26-GB300	26-GFE300
400	26-GB400	26-GFE400
600	26-GB600	26-GFE600



Drop Leg Auto-Drain

Code	Size
26-AADS-08	1/2" Inlet, 3/8" Outlet

Used at the bottom of air line drop legs to automatically drain water and oil build up in compressed air systems.



Lockout Valve

Code	Description
26-GZ300-04	300 Series 1/4 Port
26-GZ300-08	300 Series 1/2 Port
26-GZ400-08	400 Series 1/2 Port

Shuts off the air supply to purge the down stream line. Allows safe maintenance on the air system.



Digital In-Line Regulator

- Large LCD display
- Regulating Range: 0-150psi
- Accuracy: +/- 2%
- Port Size: 1/4 BSP Male x Female
- Air Flow: 2.31cfm at 100psi
- Battery Life: 1500hrs continuous use
- Ideal for spray guns

Code : 26-DAR04



1/4 M&F Mini In-Line Flow Control



Twist the sleeve to regulate flow

Code : 26-AFC04

1/4 M&F Mini In-Line Filter



Code : 26-AFM04

1/4 M&F Mini In-Line Oiler



Code : 26-ALM04

Speed Controllers. (Category 26)



SE
Banjo Elbow
Speed Controller

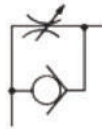
Code	Tube	Male
26-SE0402	1/4	1/8 BSPT
26-SE0404	1/4	1/4 BSPT
26-SE0604	3/8	1/4 BSPT
26-SE0606	3/8	3/8 BSPT
26-SE0608	3/8	1/2 BSPT
26-SEM0402	4mm	1/8 BSPT
26-SEM04M05	4mm	M5x0.8
26-SEM0602	6mm	1/8 BSPT
26-SEM0604	6mm	1/4 BSPT
26-SEM0606	6mm	3/8 BSPT
26-SEM06M05	6mm	M5x0.8
26-SEM06P02	6mm	1/8 BSPP
26-SEM06P04	6mm	1/4 BSPP
26-SEM0802	8mm	1/8 BSPT
26-SEM0804	8mm	1/4 BSPT
26-SEM0806	8mm	3/8 BSPT
26-SEM0808	8mm	1/2 BSPT
26-SEM08P02	8mm	1/8 BSPP
26-SEM08P04	8mm	1/4 BSPP
26-SEM08P06	8mm	3/8 BSPP
26-SEM1004	10mm	1/4 BSPT
26-SEM1006	10mm	3/8 BSPT
26-SEM1008	10mm	1/2 BSPT
26-SEM1204	12mm	1/4 BSPT
26-SEM1206	12mm	3/8 BSPT
26-SEM1208	12mm	1/2 BSPT



SS
Vertical Elbow
Speed Controller

Code	Tube	Male
26-SSM0402	4mm	1/8 BSPT
26-SSM0404	4mm	1/4 BSPT
26-SSM0602	6mm	1/8 BSPT
26-SSM0604	6mm	1/4 BSPT
26-SSM0802	8mm	1/8 BSPT
26-SSM0804	8mm	1/4 BSPT

SE and SS style speed controllers are meter out (cylinder exhaust) versions with free flow back towards the threaded end.



When a pneumatic cylinder chamber is filled with pressurized air and the air chamber on the other side of the piston is metered out by a flow control, the movement or speed of the cylinder is more consistent than to meter in the pressurized air.

Please contact the sales office if you require the meter in version.



SI
In-Line
Speed Controller

Code	Tube
26-SI03	3/16
26-SI04	1/4
26-SI06	3/8
26-SI08	1/2
26-SIM04	4mm
26-SIM06	6mm
26-SIM08	8mm
26-SIM10	10mm
26-SIM12	12mm



SF
Female In-Line
Flow
Controller

Code	Female
26-SF02	1/8 BSP
26-SF04	1/4 BSP
26-SF06	3/8 BSP
26-SF08	1/2 BSP

Shut-Off Valves (Hand Taps.) (Category 26)



Male x Male
Hand Tap

Code	Male
26-HM0202	1/8 BSPT
26-HM0404	1/4 BSPT
26-HM0606	3/8 BSPT
26-HM0808	1/2 BSPT



Tube x Tube
Hand Tap

Code	Tube
26-HT0606	6mm
26-HT0808	8mm
26-HT1010	10mm
26-HT1212	12mm



Male x Tube
Hand Tap

Code	Male	Tube
26-HMT0602	1/8 BSPT	6mm
26-HMT0604	1/4 BSPT	6mm
26-HMT0804	1/4 BSPT	8mm
26-HMT1004	1/4 BSPT	10mm
26-HMT1006	3/8 BSPT	10mm
26-HMT1204	1/4 BSPT	12mm
26-HMT1208	1/2 BSPT	12mm

Vents on tube side of Valve



Tube x Male
Hand Tap

Code	Tube	Male
26-HTM0602	6mm	1/8 BSPT
26-HTM0604	6mm	1/4 BSPT
26-HTM0606	6mm	3/8 BSPT
26-HTM0802	8mm	1/8 BSPT
26-HTM0804	8mm	1/4 BSPT
26-HTM0806	8mm	3/8 BSPT
26-HTM1004	10mm	1/4 BSPT
26-HTM1006	10mm	3/8 BSPT
26-HTM1008	10mm	1/2 BSPT
26-HTM1204	12mm	1/4 BSPT
26-HTM1206	12mm	3/8 BSPT
26-HTM1208	12mm	1/2 BSPT

Vents on threaded side of Valve

Used for turning air pressure on and off to pneumatic devices. When the air supply is closed, the three-way control valve prevents incoming air and discharges residual air on the output side, enabling safe maintenance of downstream components.

Clippard Miniature Control Valves. (Category 26)



3 Port Toggle Valve

Code : 26-MJTV-3

SPECIFICATIONS

Type: Normally closed 3-way poppet, 2 position toggle valve
 Medium: Air, water or oil
 In pressure: 300psi max
 Air Flow: @50psi = 14 SCFM @ 100psi = 25 SCFM
 Temp Range: 0° C—100° C
 Ports: Inlet, outlet and exhaust are all 1/8NPT
 Mounting: 15/32-32 male threads. Nuts and washers supplied



5 Port Toggle Valve

Code : 26-MJTV-5

SPECIFICATIONS

Type: 4-way spool valve toggle actuated 2 position toggle valve
 Medium: Air water, oil.
 In Pressure: 150 psi max
 Air Flow: @50 psi = 6.5 SCFM @ 100 psi = 10.5 SCFM
 Temp: 0°c - 100°c
 Ports: All ports are 1/8NPT
 Mounting: 15/32-32 male threads. Nuts and washers supplied



Code : 26-TV-4DP

SPECIFICATIONS

Type : 3-Position, 4-Way Valve, Plastic Toggle
 Air Flow : 7.5 scfm@100 psig
 Force : 3.0 oz nominal
 Max PSI : 120 psig
 Ports 1/8 : NPT
 Temperature Range : 32 to 230 F
 Travel Arc : 30 degrees each side of centre

Many other Clippard valves also available. Contact the sales office with your requirements.



Compressor Filters. (Category 26)

Code	Style	Thread Size	Diameter	Material	Element Code	Element Type	Element Size
26-CF06	C	3/8 BSP	65mm	Plastic	N/A	Foam	
26-CF08	A	1/2 BSP	90mm	Plastic	26-CFE08	Paper	67x35x35mm
26-CF12	A	3/4 BSP	135mm	Plastic	26-CFE12	Paper	67x35x67mm
26-CF16	B	1" BSP	150mm	Plastic	26-CFE16	Paper	105x70x50mm

Note : 26-CF12 has a metal thread. All other sizes have plastic thread.

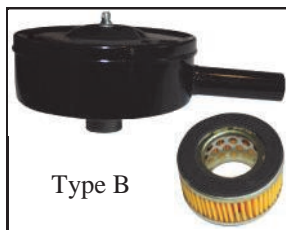


Rectangular Filter Assembly

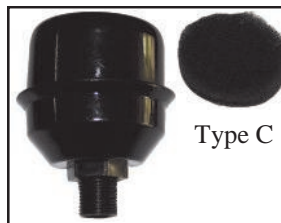
Code 26-CFS



Type A



Type B



Type C

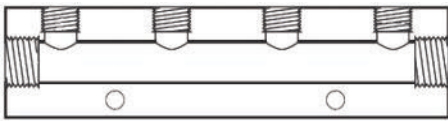
Do you need a thread sealant? We stock various types of thread tape and a full range of Bondloc thread lockers and sealants.



Air Manifolds. (Category 26)

Type S1

Silver anodised aluminium. Single Sided with Mounting Holes (4 ports = 4 outlets on one side)

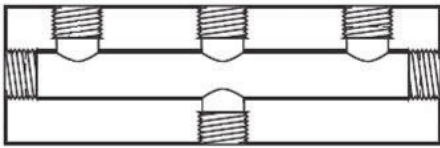


Code	Inlet	Outlet	Ports
26-MAS0402-4	1/4 BSP	1/8 BSP	4
26-MAS0402-5	1/4 BSP	1/8 BSP	5
26-MAS0402-6	1/4 BSP	1/8 BSP	6
26-MAS0604-3	3/8 BSP	1/4 BSP	3
26-MAS0604-4	3/8 BSP	1/4 BSP	4
26-MAS0604-5	3/8 BSP	1/4 BSP	5
26-MAS0604-6	3/8 BSP	1/4 BSP	6



Type S2

Blue anodised aluminium. Single Sided. No Mounting Holes. Has 1 extra port in the back.

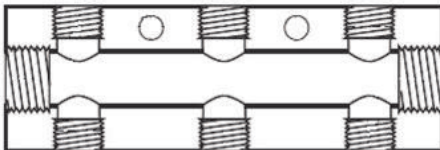


Code	Inlet	Outlet	Ports
26-MAS0404-2	1/4 BSP	1/4 BSP	2
26-MAS0404-3	1/4 BSP	1/4 BSP	3
26-MAS0404-4	1/4 BSP	1/4 BSP	4
26-MAS0404-5	1/4 BSP	1/4 BSP	5



Type D

Silver anodised aluminium. Double Sided with Mounting Holes (6 ports = 3 outlets each side)



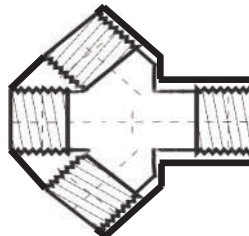
Code	Inlet	Outlet	Ports
26-MAD0402-8	1/4 BSP	1/8 BSP	8
26-MAD0604-6	3/8 BSP	1/4 BSP	6
26-MAD0604-8	3/8 BSP	1/4 BSP	8



Type M

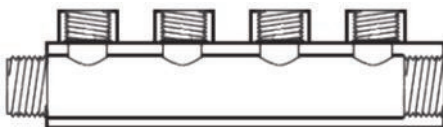
Silver anodised aluminium. Mushroom shape.

Code	Inlet	Outlet	Ports
26-MAM0404-3	1/4 BSP	1/4 BSP	3



Type S3

Nickel Plated Brass. Single Sided. Female Outlets. One Male Inlet and 1 Female

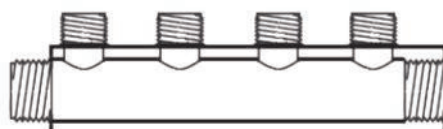


Code	Inlet	Outlet	Ports
26-MBS1208-4	3/4 BSP	1/2 BSP	4



Type S4

Nickel Plated Brass. Single Sided. Male Outlets. One Male Inlet and 1 Female



Code	Inlet	Outlet	Ports
26-MBS1208-4M	3/4 BSP	1/2 BSP	4



Air Silencers. (Category 26)



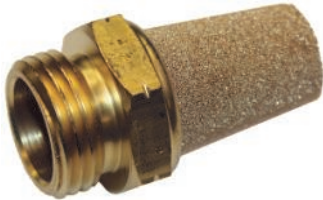
SF
Flat Silencer

Code	Male
26-ASF02	1/8 BSPP
26-ASF04	1/4 BSPP
26-ASF06	3/8 BSPP
26-ASF08	1/2 BSPP
26-ASF12	3/4 BSPP
26-ASF16	1" BSPP
26-ASFM05	M5x0.8



SPL
Legris Style
Plastic Silencer

Code	Male
26-ASPL02	1/8 BSPP
26-ASPL04	1/4 BSPP
26-ASPL06	3/8 BSPP
26-ASPL08	1/2 BSPP
26-ASPL12	3/4 BSPP
26-ASPL16	1" BSPP



SM
Medium Silencer

Code	Male
26-ASM02	1/8 BSPP
26-ASM04	1/4 BSPP
26-ASM06	3/8 BSPP
26-ASM08	1/2 BSPP
26-ASM12	3/4 BSPP
26-ASM16	1" BSPP
26-ASMM05	M5x0.8



SVE
Regulated
Silencer

Code	Male
26-ASVE02	1/8 BSPP
26-ASVE04	1/4 BSPP



SVL
Regulated
Silencer with Locknut

Code	Male
26-ASVL02	1/8 BSPP
26-ASVL04	1/4 BSPP
26-ASVL06	3/8 BSPP

SF and SM silencers also available in Stainless Steel. Refer Category 31



SP
Plastic
Silencer

Code	Male
26-ASP02	1/8 BSPP
26-ASP04	1/4 BSPP
26-ASP06	3/8 BSPP
26-ASP08	1/2 BSPP



RB
Domed Air
Breather / Filter

Code	Male
26-RB04	1/4 BSPT
26-RB06	3/8 BSPT
26-RB08	1/2 BSPT
26-RB12	3/4 BSPT

Brass Breathers also available. Refer to Screwed Brass Section

Do you need a thread sealant? We stock various types of thread tape and a full range of Bondloc thread lockers and sealants.

