

Pressure & Vacuum Gauges (Category 27)

PART NUMBERING SYSTEM

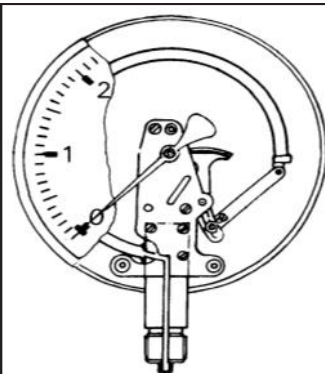
27- [] [] [] [] [] - []

- Pressure	- Dry	04 - 40mm face	B - Bottom Entry	2 - 1/8 BSP
C - Compound	L - Liquid Filled	05 - 50mm face	R - Rear Entry	4 - 1/4 BSP
S - All Stainless		06 - 63mm face		6 - 3/8 BSP
V - Vacuum		08 - 80mm face		8 - 1/2 BSP
		10 - 100mm face		

001 - 100 kpa / 15 psi
002 - 250 kpa / 36 psi
004 - 400 kpa / 58 psi
006 - 600 kpa / 87 psi
007 - 700 kpa / 100 psi
008 - 800 kpa / 116 psi
010 - 1000 kpa / 145 psi
014 - 1400 kpa / 200 psi
016 - 1600 kpa / 230 psi
025 - 2500 kpa / 360 psi
040 - 4000 kpa / 580 psi
060 - 6000 kpa / 870 psi
070 - 7000 kpa / 1000 psi
080 - 8000 kpa / 1160 psi
100 - 10000 kpa / 1450 psi
160 - 16000 kpa / 2320 psi
207 - 20700 kpa / 3000 psi
250 - 25000 kpa / 3600 psi
400 - 40000 kpa / 5800 psi
600 - 60000 kpa / 8700 psi



Certificate of compliance. 10/CN/2226-0-REV 0



- All Gauges are Bourdon Tube Type
- Bourdon Tube Gauges are suited to most general equipment applications
- Liquid filling protects the internals of a gauge from corrosive atmospheres and dampens the effect of vibration and pulsation
- To prevent damage, gauges should not be used at more than 2/3 of their maximum readout.



Case & Bezel - 304 Stainless Steel or Black Steel

Face Material - Glass for dry gauges 40mm, 50mm, 63mm and 100mm. Polycarbonate for liquid filled gauges and 80mm dry gauges. Safety Glass for all stainless gauges

Working Temperature: -20 to +60° C

OEM gauges available with custom dial and company name.

40mm Dry Gauges. Brass Internals

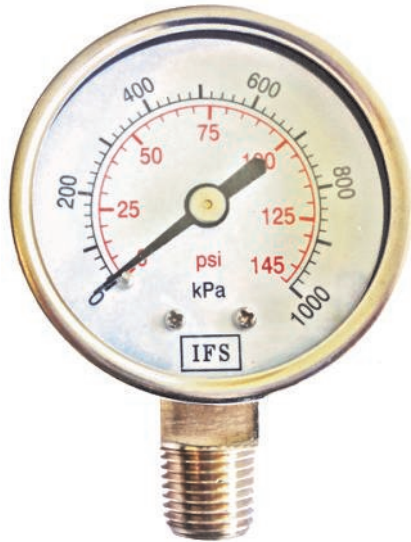


BOTTOM ENTRY			
Code	Range	Case	Thread
27-04B2-002	0-250 kpa / 36 psi	Stainless Steel	1/8 BSPT
27-04B2-004	0-400 kpa / 58 psi	Stainless Steel	1/8 BSPT
27-04B2-010	0-1000 kpa / 145 psi	Stainless Steel	1/8 BSPT

REAR ENTRY			
Code	Range	Case	Thread
27-V04R2-001	-100 - 0 kpa	Stainless Steel	1/8 BSPT
27-04R2-002	0-250 kpa / 36 psi	Stainless Steel	1/8 BSPT
27-04R2-004	0-400 kpa / 58 psi	Stainless Steel	1/8 BSPT
27-04R2-010	0-1000 kpa / 145 psi	Stainless Steel	1/8 BSPT
27-04R4-010	0-1000 kpa / 145 psi	Stainless Steel	1/4 BSPT

Pressure & Vacuum Gauges (Category 27)

50mm Dry Gauges. Brass Internals



BOTTOM ENTRY			
Code	Range	Case	Thread
27-V05B4-001	-100 - 0 kpa	Stainless Steel	1/4 BSPT
27-05B2-008B	0-800 kpa / 116 psi	Black Steel	1/8 BSPT
27-05B4-001	0-100 kpa / 15 psi	Stainless Steel	1/4 BSPT
27-05B4-0016	0-160 kpa / 23 psi	Stainless Steel	1/4 BSPT
27-05B4-002	0-250 kpa / 36 psi	Stainless Steel	1/4 BSPT
27-05B4-002FC	0-250 kpa / 36 psi	SS Filter Clean	1/4 BSPT
27-05B4-004	0-400 kpa / 58 psi	Stainless Steel	1/4 BSPT
27-05B4-004BS	0-400 kpa / 58 psi	Black Safety	1/4 BSPT
27-05B4-008	0-800 kpa / 116 psi	Stainless Steel	1/4 BSPT
27-05B4-008B	0-800 kpa / 116 psi	Black Steel	1/4 BSPT
27-05B4-010	0-1000 kpa / 145 psi	Stainless Steel	1/4 BSPT
27-05B4-010B	0-1000 kpa / 145 psi	Black Steel	1/4 BSPT
27-05B4-016	0-1600 kpa / 230 psi	Stainless Steel	1/4 BSPT
27-05B4-016B	0-1600 kpa / 230 psi	Black Steel	1/4 BSPT
27-05B4-025	0-2500 kpa / 360 psi	Stainless Steel	1/4 BSPT
27-05B4-040	0-4000 kpa / 580 psi	Stainless Steel	1/4 BSPT
27-05B4-080BS	0-8000 kpa / 1160 psi	Black Safety	1/4 BSPT
27-05B4-160	0-16000 kpa / 2320 psi	Stainless Steel	1/4 BSPT
27-05B4-160BS	0-16000 kpa / 2320 psi	Black Safety	1/4 BSPT
27-05B4-250BS	0-25000 kpa / 3600 psi	Black Safety	1/4 BSPT
27-05B4N-025	0-2500 kpa / 360 psi	Stainless Steel	1/4 NPT



REAR ENTRY			
Code	Range	Case	Thread
27-V05R2-001	-100 - 0 kpa	Stainless Steel	1/8 BSPT
27-05R2-002	0-250 kpa / 36 psi	Stainless Steel	1/8 BSPT
27-05R2-004	0-400 kpa / 58 psi	Stainless Steel	1/8 BSPT
27-05R2-008	0-800 kpa / 116 psi	Stainless Steel	1/8 BSPT
27-05R2-010	0-1000 kpa / 145 psi	Stainless Steel	1/8 BSPT
27-05R2-010B	0-1000 kpa / 145 psi	Black Steel	1/8 BSPT
27-05R2-016	0-1600 kpa / 230 psi	Stainless Steel	1/8 BSPT
27-05R2-040	0-4000 kpa / 580 psi	Stainless Steel	1/8 BSPT
27-05R4-001	0-100 kpa / 15 psi	Stainless Steel	1/4 BSPT
27-05R4-002	0-250 kpa / 36 psi	Stainless Steel	1/4 BSPT
27-05R4-002FC	0-250 kpa / 36 psi	SS Filter Clean	1/4 BSPT
27-05R4-008	0-800 kpa / 116 psi	Stainless Steel	1/4 BSPT
27-05R4-010	0-1000 kpa / 145 psi	Stainless Steel	1/4 BSPT
27-05R4-016	0-1600 kpa / 230 psi	Stainless Steel	1/4 BSPT
27-05R4-016B	0-1600 kpa / 230 psi	Black Steel	1/4 BSPT

Panel Mount Kits to Suit 40 and 50mm rear entry gauges

Code	Gauge size
27-PMK04	40mm
27-PMK05	50mm



Pressure & Vacuum Gauges (Category 27)

63mm Dry Gauges. Brass Internals



BOTTOM ENTRY			
Code	Range	Case	Thread
27-V06B4-001	-100 - 0 kpa	Stainless Steel	1/4 BSPT
27-06B4-001	0-100 kpa / 15 psi	Stainless Steel	1/4 BSPT
27-06B4-002	0-250 kpa / 36 psi	Stainless Steel	1/4 BSPT
27-06B4-004	0-400 kpa / 58 psi	Stainless Steel	1/4 BSPT
27-06B4-006	0-600 kpa / 87 psi	Stainless Steel	1/4 BSPT
27-06B4-008	0-800 kpa / 116 psi	Stainless Steel	1/4 BSPT
27-06B4-010	0-1000 kpa / 145 psi	Stainless Steel	1/4 BSPT
27-06B4-016	0-1600 kpa / 230 psi	Stainless Steel	1/4 BSPT
27-06B4-025	0-2500 kpa / 360 psi	Stainless Steel	1/4 BSPT
27-06B4-040	0-4000 kpa / 580 psi	Stainless Steel	1/4 BSPT
27-06B4-040B	0-4000 kpa / 580 psi	Black Steel	1/4 BSPT
27-06B4-060	0-6000 kpa / 870 psi	Stainless Steel	1/4 BSPT



REAR ENTRY			
Code	Range	Case	Thread
27-06R4-002	0-250 kpa / 36 psi	Stainless Steel	1/4 BSPT
27-06R4-010	0-1000 kpa / 145 psi	Stainless Steel	1/4 BSPT
27-06R4-016	0-1600 kpa / 230 psi	Stainless Steel	1/4 BSPT
27-06R4-040	0-4000 kpa / 580 psi	Stainless Steel	1/4 BSPT

Panel Mount Kit to Suit 63mm rear entry gauges



Code : 27-PMK06



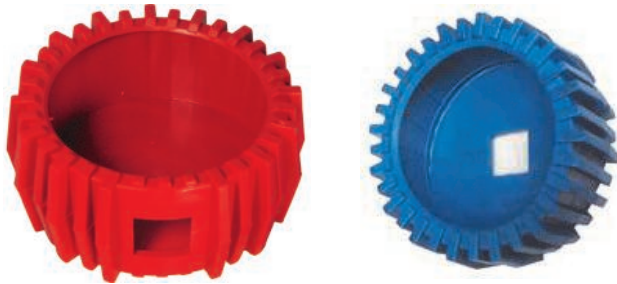
Front Flange to Suit 50 and 63mm rear entry gauges

Code	Gauge size
27-FF05	50mm
27-FF06	63mm



Pressure & Vacuum Gauges (Category 27)

63mm Rubber Gauge Protector



Code	Description
27-06B4-RP	63mm 1/4 Bottom Entry Rubber Gauge Protector
27-06R4-RP	63mm 1/4 Rear Entry Rubber Gauge Protector

- Fits both dry and liquid filled 63mm gauges

80mm Dry Gauges. Brass Internals



BOTTOM ENTRY			
Code	Range	Case	Thread
27-08B4-002B	0-250 kpa	Black Steel	1/4 BSPT
27-08B4-004B	0-400 kpa	Black Steel	1/4 BSPT
27-08B4-008B	0-800 kpa	Black Steel	1/4 BSPT
27-08B4-010B	0-1000 kpa	Black Steel	1/4 BSPT
27-08B4-016B	0-1600 kpa	Black Steel	1/4 BSPT
27-08B4-025B	0-2500 kpa	Black Steel	1/4 BSPT
27-08B4-040B	0-4000 kpa	Black Steel	1/4 BSPT

REAR ENTRY			
Code	Range	Case	Thread
27-08R4-016B	0-1600 kpa	Black Steel	1/4 BSPT
27-08R4-025B	0-2500 kpa	Black Steel	1/4 BSPT

100mm Dry Gauges. Brass Internals



BOTTOM ENTRY			
Code	Range	Case	Thread
27-V10B6-001	-100 - 0 kpa	Stainless Steel	3/8 BSPT
27-10B6-001	0-100 kpa / 15 psi	Stainless Steel	3/8 BSPT
27-10B6-002	0-250 kpa / 36 psi	Stainless Steel	3/8 BSPT
27-10B6-004	0-400 kpa / 58 psi	Stainless Steel	3/8 BSPT
27-10B6-008	0-800 kpa / 116 psi	Stainless Steel	3/8 BSPT
27-10B6-008B	0-800 kpa / 116 psi	Black Steel	3/8 BSPT
27-10B6-010	0-1000 kpa / 145 psi	Stainless Steel	3/8 BSPT
27-10B6-016	0-1600 kpa / 230 psi	Stainless Steel	3/8 BSPT
27-10B6-025	0-2500 kpa / 360 psi	Stainless Steel	3/8 BSPT
27-10B6-040	0-4000 kpa / 580 psi	Stainless Steel	3/8 BSPT

Pressure & Vacuum Gauges (Category 27)

63mm Liquid Filled Gauges. Brass Internals



BOTTOM ENTRY			
Code	Range	Case	Thread
27-VL06B4-001	-100 - 0 kpa	Stainless Steel	1/4 BSPT
27-CL06B4-001	-100 - 100 kpa	Stainless Steel	1/4 BSPT
27-L06B4-001	0-100 kpa / 15 psi	Stainless Steel	1/4 BSPT
27-L06B4-002	0-250 kpa / 36 psi	Stainless Steel	1/4 BSPT
27-L06B4-004	0-400 kpa / 58 psi	Stainless Steel	1/4 BSPT
27-L06B4-006	0-600 kpa / 87 psi	Stainless Steel	1/4 BSPT
27-L06B4-007	0-700 kpa / 100 psi	Stainless Steel	1/4 BSPT
27-L06B4-008	0-800 kpa / 116 psi	Stainless Steel	1/4 BSPT
27-L06B4-010	0-1000 kpa / 145 psi	Stainless Steel	1/4 BSPT
27-L06B4-014	0-1400 kpa / 200 psi	Stainless Steel	1/4 BSPT
27-L06B4-016	0-1600 kpa / 230 psi	Stainless Steel	1/4 BSPT
27-L06B4-025	0-2500 kpa / 360 psi	Stainless Steel	1/4 BSPT
27-L06B4-040	0-4000 kpa / 580 psi	Stainless Steel	1/4 BSPT
27-L06B4-060	0-6000 kpa / 870 psi	Stainless Steel	1/4 BSPT
27-L06B4-070	0-7000 kpa / 1000 psi	Stainless Steel	1/4 BSPT
27-L06B4-080	0-8000 kpa / 1160 psi	Stainless Steel	1/4 BSPT
27-L06B4-100	0-10000 kpa / 1450 psi	Stainless Steel	1/4 BSPT
27-L06B4-160	0-16000 kpa / 2320 psi	Stainless Steel	1/4 BSPT
27-L06B4-207	0-20700 kpa / 3000 psi	Stainless Steel	1/4 BSPT
27-L06B4-250	0-25000 kpa / 3600 psi	Stainless Steel	1/4 BSPT
27-L06B4-400	0-40000 kpa / 5800 psi	Stainless Steel	1/4 BSPT
27-L06B4-600	0-60000 kpa / 8700 psi	Stainless Steel	1/4 BSPT
27-L06B4-690	0-69000 kpa / 10000 psi	Stainless Steel	1/4 BSPT
27-L06B4P-016	0-16 Bar / 230 psi	Stainless Steel	1/4 BSPP



REAR ENTRY			
Code	Range	Case	Thread
27-VL06R4-001	-100 - 0 kpa	Stainless Steel	1/4 BSPT
27-L06R4-001	0-100 kpa / 15 psi	Stainless Steel	1/4 BSPT
27-L06R4-002	0-250 kpa / 36 psi	Stainless Steel	1/4 BSPT
27-L06R4-004	0-400 kpa / 58 psi	Stainless Steel	1/4 BSPT
27-L06R4-006	0-600 kpa / 87 psi	Stainless Steel	1/4 BSPT
27-L06R4-008	0-800 kpa / 116 psi	Stainless Steel	1/4 BSPT
27-L06R4-010	0-1000 kpa / 145 psi	Stainless Steel	1/4 BSPT
27-L06R4-016	0-1600 kpa / 230 psi	Stainless Steel	1/4 BSPT
27-L06R4-025	0-2500 kpa / 360 psi	Stainless Steel	1/4 BSPT
27-L06R4-040	0-4000 kpa / 580 psi	Stainless Steel	1/4 BSPT
27-L06R4-060	0-6000 kpa / 870 psi	Stainless Steel	1/4 BSPT
27-L06R4-080	0-8000 kpa / 1160 psi	Stainless Steel	1/4 BSPT
27-L06R4-160	0-16000 kpa / 2320 psi	Stainless Steel	1/4 BSPT
27-L06R4-250	0-25000 kpa / 3600 psi	Stainless Steel	1/4 BSPT
27-L06R4-400	0-40000 kpa / 5800 psi	Stainless Steel	1/4 BSPT

Please Note: Liquid filled gauges must be vented (after installation)
 This is to prevent build-up of pressure if gauge leaks internally.
 Liquid filled gauges are not suitable where oxidising agents such as
 Oxygen, Chlorine, Nitric Acid and Hydrogen Peroxide are being used

Pressure & Vacuum Gauges (Category 27)

100mm Liquid Filled Gauges. Brass Internals



BOTTOM ENTRY			
Code	Range	Case	Thread
27-CL10B6-0015	-100 - 150 kpa	Stainless Steel	3/8 BSPT
27-L10B6-002	0-250 kpa / 36 psi	Stainless Steel	3/8 BSPT
27-L10B6-004	0-400 kpa / 58 psi	Stainless Steel	3/8 BSPT
27-L10B6-008	0-800 kpa / 116 psi	Stainless Steel	3/8 BSPT
27-L10B6-010	0-1000 kpa / 145 psi	Stainless Steel	3/8 BSPT
27-L10B6-016	0-1600 kpa / 230 psi	Stainless Steel	3/8 BSPT
27-L10B6-025	0-2500 kpa / 360 psi	Stainless Steel	3/8 BSPT
27-L10B6-040	0-4000 kpa / 580 psi	Stainless Steel	3/8 BSPT
27-L10B6-060	0-6000 kpa / 870 psi	Stainless Steel	3/8 BSPT
27-L10B6-080	0-8000 kpa / 1160 psi	Stainless Steel	3/8 BSPT
27-L10B6-100	0-10000 kpa / 1450 psi	Stainless Steel	3/8 BSPT
27-L10B6-160	0-16000 kpa / 2320 psi	Stainless Steel	3/8 BSPT
27-L10B6-250	0-25000 kpa / 3600 psi	Stainless Steel	3/8 BSPT
27-L10B6-400	0-40000 kpa / 5800 psi	Stainless Steel	3/8 BSPT

REAR ENTRY			
Code	Range	Case	Thread
27-L10R6-008	0-800 kpa / 116 psi	Stainless Steel	3/8 BSPT
27-L10R6-010	0-1000 kpa / 145 psi	Stainless Steel	3/8 BSPT
27-L10R6-016	0-1600 kpa / 230 psi	Stainless Steel	3/8 BSPT
27-L10R6-025	0-2500 kpa / 360 psi	Stainless Steel	3/8 BSPT
27-L10R6-040	0-4000 kpa / 580 psi	Stainless Steel	3/8 BSPT

63mm Full Stainless Steel Liquid Filled Gauges

BOTTOM ENTRY		
Code	Range	Thread
27-SL06B4-008	0-800 kpa / 116 psi	1/4 BSPT
27-SL06B4-010	0-1000 kpa / 145 psi	1/4 BSPT
27-SL06B4-016	0-1600 kpa / 230 psi	1/4 BSPT
27-SL06B4-025	0-2500 kpa / 360 psi	1/4 BSPT
27-SL06B4-040	0-4000 kpa / 580 psi	1/4 BSPT
27-SL06B4N-010	0-1000 kpa / 145 psi	1/4 NPT
27-SL06B4N-016	0-1600 kpa / 230 psi	1/4 NPT
27-SL06B4N-080	0-8000 kpa / 1160 psi	1/4 NPT



Pressure Gauge Snubber

Code	Male	Female	Material
27-SN04MF	1/4 BSPT	1/4 BSP	Stainless Steel



Gauge snubbers are used to minimize effects from pulsation and surges. The snubber helps keep accurate data flowing by dampening pulsation and surges, increasing gauge life by reducing wear.